

**REMOTA**  
days of leisure in patagonia

**Remota Excursions**

Travelers can enjoy the natural and cultural treasures of Chilean Patagonia year-round, and one does not need to climb high altitudes to view the region's majestic mountains, which rises steeply from sea level.

Throughout the region, in forests and prairie, it is possible to see guanacos, rheas, foxes, pumas, geese and wild ducks. In mountainous areas travelers can view glaciers, rivers and multicolored lakes, or enjoy the region's labyrinth of fjords and channels.

Excursions or treks in the area also take visitors to estancias, with their tin-walled houses, airy sheep-shearing barns and spacious corrals. These estancias are also populated with greenhouses, fruit-tree gardens, sheep dog houses, seemingly never-ending fences, and, every once in awhile, a gaucho, who will pass by on horse, following an imaginary line that crosses the wide pampa, en route to his picturesque wood and tin shack. Visitors are often in awe of the immensity of the wide-open plains of the region.



**III. LAKE SOFÍA**

This is one of the most important archeological sites in the far south of Chile. The first inhabitants of Patagonia lived here at Lake Sofia together with now-extinct mega fauna such as the prehistoric horse (caballo enano), the milodón (giant sloth), saber tooth tiger, and more. This area is also attractive for its beautiful geography, its mix of lagoons and lakes such as Sofia, and isolated peaks that are home to condor and eagle nesting sites, and extensive native beech forests that are full of flowers. This region also does not have marked trails, the reason why excursions here are led by a knowledgeable gaucho and guide.



**IV. TORRES DEL PAINE**

Torres del Paine National Park, created in 1959, was declared a World Biosphere Reserve by UNESCO in 1978. In spite of the fact that the entire region is a natural and cultural reserve, the park itself is one of the best-known attractions in the world. Its beauty is easy to seek out, but hard to forget. No one who has visited Torres del Paine can forget the view of the sun cast upon the park's tall peaks, coloring the tips of the Cuernos (Horns), the Paine Grande peak, the Espada Peak, or the Shark's Fin Peak in pink tones. By foot, van or kayak, the view of Torres del Paine will always be a high point of a trip to Patagonia.



**I. PUERTO NATALES AND SIERRA DOROTEA**

Puerto Natales is the geographical center of Chilean Patagonia, and it boasts one of the most picturesque ports in Chile, grandly displaying the ingenuity of the resident locals, who in turn have learned to adapt to this land from the indigenous before them, as well as the first explorers and adventurers, so that they may live a good life in the middle of sometimes brutal climate. The Sierra Dorothea hill, which backs Puerto Natales, is known for its dense beech forest, deep gorges and small lakes, and a spectacular lookout over the town and the Última Esperanza Sound. From this lookout point it is possible to see the four fundamental geological formations that make up Patagonia: pampa, mountains, fjords, and ice. There are no marked trails on Sierra Dorothea, the reason why excursions here are led by a knowledgeable gaucho and guide.



**V. BAGUALES MOUNTAIN RANGE**

Los Baguales is a little-known area where travelers can soak up the pleasure of distancing themselves from the "well-known," the essence of any good trip. A person's sense of distance disappears as the vast pampa that is Patagonia appears, creating a sense of mystery of that which one sees but doesn't understand. The area is home to wild horses, guanacos, rheas and pumas, although the latter is difficult to spot. Los Baguales is known for fascinating, strange geological formations, that the local indigenous groups believed were the fossilized remains of extraterrestrials and the flat plains their landing areas. Here visitors often find fossils. There is no trail. Trekking here along the Baguales range is an unforgettable experience.



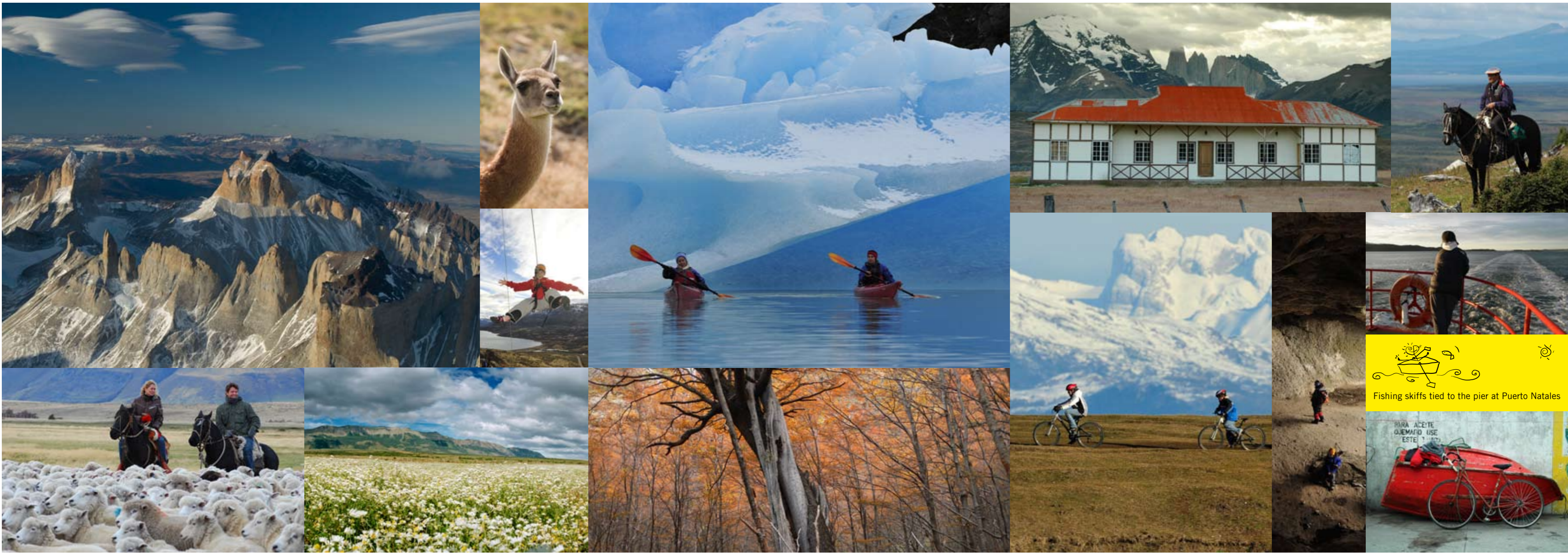
**II. SOUTHERN FJORD**

The first navigators here sailed through the Patagonia's labyrinth of fjords seeking protected bays, fish, and fresh water, and a more protected path to the Atlantic Sea, much like the Strait that Magellan discovered on November 1, 1520. Before them, the indigenous groups Kawésqar and Yamanes plied these waters, followed by colonists. Yet even today, these fjords are still some of the most unpopulated on the planet. The Última Esperanza Sound and the neighboring Eberhard Fjord are prime examples of a traveler's idea of the mythical channels at the End of the World.



**VI. MONTE ROTUNDO**

A very attractive area for its dense forests, lakes and fjords, Mount Rotundo is rich in flora typically found near channels, such as evergreen beech, canelo, and Guaitecas Cypress, flora that needs a lot of humidity. In the forest shade, we find here a varied amount of mushrooms and lichens. The landscape offers surprises such as the snowy peaks of the Pinto mountain range and the impressive Mount Rotundo.



Fishing skiffs tied to the pier at Puerto Natales



## Remota is open year-round because any time of the year is a good time to visit Patagonia



### Patagonia, Year-Round

Remota is open year-round because any time of the year is a good time to visit Patagonia.

During the summer, the days are long and at times the wind blows fiercely, with maximum temperatures between 13 and 20° C and minimum temperatures around 5° C. During autumn the color of the region's beech trees change to crimson, orange and yellow. In the winter, the days are shorter but clear and sunny, and the wind subsides; also, the mountain peaks are dusted with snow, but maritime weather is relatively mild, with little snow at sea level. In the spring, life begins anew, flowers bloom, and guanacos give birth to young chulengos.

Remota offers 27 different excursions in a region of extraordinary natural beauty and cultural richness, in Torres del Paine as well as the region's mountains and glaciers, lakes, rivers, and forest, to grand sheep estancias that dot the immense, grassy pampa (prairie), to places where ancient native cultures once roamed such as the Onas, or Huilliches, whose legends permeate the region and whose stories seduce travelers of today as much as they seduced the early explorers Ferdinand Magellan and Charles Darwin.

### What you might discover during "days of leisure" at Remota:

Every traveler can discover new things every day, if they look at Patagonia with new eyes. Native beech forest dappled in tones of brilliant yellow and ruby red during the autumn; a hand or a mysterious sketch painted in a cave; the long feather tips of the wing of a condor that permit it to sail like no other bird; colored tin "puesto" shelters of a solitary gaucho; the zigzagging lines of never-ending roads and fences; electric blue glaciers; the vibrant turquoise hue of Lake Pehóe and Laguna Amarga; beech trees twisted and bent by the wind; the lined-up miniature houses for sheep dogs at an estancia, its houses and corrals; the old mutton factory at Puerto Bories. Fishing skiffs tied to the pier at Puerto Natales; wild geese seen in pairs of contrasting colors; the agitated and windblown sea at the Strait of Magellan. The grandeur of the sensation of immensity.

The 1,800-meter vertical rise seen from its base, the Horns of Paine together with Lake Pehóe, the two arms of Glacier Grey that flow from the Southern Ice Field.

To arrive at solitary and remote places, where the sensation of distance from the every day is heightened, the objective of any good traveler.

Remota organizes excursions in accordance with the desires and diverse expectations of travelers. We offer trekking, climbing, horseback riding, bicycling, kayaking, and sailing, all in varying levels of difficulty for every kind of traveler.

75% of our excursions are unique to Remota, created following a thorough investigation of the area. Most excursions do not follow trails. This way, and considering the vastness of the scenery, our excursions allow our guests to feel as if they are the first travelers to discover the region, allowing themselves to be seduced by immensity and silence.



## I. PUERTO NATALES AND SIERRA DOROTEA

### 1. Puerto Natales and its people

**Half-day / walk / easy.**

This excursion puts us in contact with the people of Puerto Natales, their life and history, since the days of the indigenous Aónikenk and Kawésqar to the early pioneers and their development of sheep ranching. We visit the Frigorífico Museum (sheep production facility) in Puerto Bories, the Fisherman's Pier, the Municipal Museum, the Main Plaza, and the greenhouses of Señora Rosalba.

### 2. Walk at Sierra Dorotea

**Full day / walk / difficult / climb 600 meters / not a defined trail.**

We first climb for 3 hours until reaching the peak at 900 meters high. The view from Sierra Dorotea offers us an excellent view of Patagonian geography: on one end the mountainous characteristics of Chilean Patagonia, and at the other end the infinite Argentine pampa. Toward the south, we can see the fjords and snowy peaks of the Southern Ice Field.

### 3. Birdwatching at Dos Lagunas

**Full day / Easy.**

Dos Lagunas is an exceptional place for birdwatching. We will have up-close views of a variety of ducks, such as the flying steamer duck and the yellow-billed pintail, buff-necked ibis, coots, southern wiggoners, white-tufted grebes, great grebes, black-necked swans, coscoroba swans, oystercatchers, doves and flamingos. If we're lucky, we'll see condors, eagles and caracaras.

### 4. Ski at the Cerro Dorotea (from June to August)

**Full day / medium difficulty / subject to climatic conditions.**

The Valdelén Ski Center is located 25 kilometers from Remota, on the Argentine side of the Sierra Dorotea. The center has 6 runs, 2 chairs, and one chairlift. Ideal for beginning skiers.

### 5. Road to Villa Dorotea

**Full day / walk / difficult / not a marked trail.**

We climb Sierra Dorotea until we reach the mountain's shoulder then continue through a 100-year-old beech forest. The excursion ends at Villa Dorotea, a small mining town on the border with Argentina. This excursion is particularly attractive during the "Las Jineteadas de Dorotea," a local gaucho festival where horsemen attempt to ride bucking broncos.

### 6. Horseback ride at Sierra Dorotea

**Full day / horseback / medium difficulty / not a marked trail.**

Sierra Dorotea is one of the most beautiful mountains in the region, with an extraordinary landscape where you can see mountains, the pampa, and the canals all from one viewpoint.

It is a wonderful place to ride atop docile horses that are accustomed to difficult terrain. The ride is accompanied by a gaucho (also called a baquedano), who will share with guests a hot mate tea by a bonfire. The clothing, the character and culture of the gauchos offers guests a chance to understand life and work in sometimes inhospitable land.

### 7. Trekking and horseback ride through Sierra Dorotea

**Full day / difficult / not a marked trail.**

This excursion begins with a walk for 3 hours to the mountain shoulder of Sierra Dorotea where, along with a lake, we meet a gaucho with horses. We then ride for 3 hours through beech forest and a high mountain valley. Good opportunity to see condors.

### 8. Puerto Natales by bicycle

**Half-day / easy.**

We begin at Puerto Bories, an old mutton processing plant constructed in 1915 and located on the shore of the fjord Última Esperanza. We then pedal through the area known as "Los Huertos," where families cultivate vegetables and fruit in greenhouses. Later we visit a cemetery, the Fisherman's pier, and the main plaza, spending a few hours with the people of Patagonia and understanding better their history.

## II. SOUTHERN FJORDS

### 9. Lamb BBQ at Villa Luisa

**Full day / walk / easy.**

We visit Puerto Consuelo, the first estancia in the Última Esperanza province. Then we head to Villa Luisa where we will enjoy a typical lamb BBQ. Because Villa Luisa cannot be reached by road, we propose 4 alternatives: 1 hour of trekking, 5 hours of trekking, 3 hours by bicycle, or 10 minutes in a zodiac inflatable boat. Here Hermann Eberhard greets us, the great-grandson of the first pioneer, who will tell the story and history of his family

### 10. Navigation through the Última Esperanza Sound

**Full day / walk / easy.**

We will navigate for 3 hours through the Última Esperanza fjord to the Mount Balmaceda, which is within the Bernardo O'Higgins National Park, the largest national park in Chile. Here we'll see waterfalls, sea lions, a cormorant colony, seagulls, Chilean skuas and condors, and the Balmaceda Glacier. We then take a brief walk that will put us up-close to the Glacier Serrano.

### 11. Señoret Channel Horseback Ride

**Half-day / horseback riding / easy.**

An opportunity to ride horseback through pampa and admire the vast Patagonian landscape: steppe, mountains, and channels. We continue crossing the pampa until we reach Puerto Prat, the first port in the region, located on the shore of the Eberhard Fjord.

## III. LAKE SOFÍA

### 12. Caves and Paintings

**Full day / walk / medium difficulty / not a marked trail.**

Here we have the opportunity to explore caves that served as the first sheltered inhabited area of Patagonia, such as the Cueva del Medio, Cueva de la Ventana, Dos Herraduras, and the Cueva del Milodón. This ancient history even today challenges archaeologists and paleontologists. We will walk along rock walls that conserve vestiges of cave paintings that are estimated to be thousands of years old. We arrive at the Lake Sofía Viewpoint, where we are treated to a majestic perspective of the valley.

### 13. Three Caves

**Half-day / walk / easy.**

This excursion takes us to the caves Cueva Chica and Cueva del Medio, then to the Cueva del Milodón, site of the extinct giant sloth, the milodon, and the famous cave that incited the imagination of early European settlers at the end of the 19th century who, believing the milodon to still be alive, organized expeditions through Patagonia to hunt the beast. We then visit the Puerto Consuelo Estancia, to Puerto Prat and to the Villa Bories, places where the first colonists in the area worked and dreamed.

### 14. Paso La Ventana walk with snowshoes

(available from June to August)

**Full day / walk / difficult / subject to climatic conditions.**

We reach the La Ventana pass after three hours climbing, known for its high accumulation of snow. We will use our snowshoes to walk through snow and enjoy the landscape, including spectacular views of the Prat Mountain Range, Tenerife Peak, the Paine Massif, Glacier Grey, Ventana Peak, Campana Peak, Moore Monument and the Última Esperanza Fjord.

### 15. Chile Trail (Sendero de Chile)

**Full day / medium difficulty.**

The Sendero de Chile is a visionary project that seeks to turn Chile into a world-class destination for trekking. We will visit a portion of this trail, which boasts a view of the Paine Massif, Lake Portefo, and Lake Toro. The vegetation here is densely forested due to frequent rainfall. We will get to know the typical flora of the Patagonian channels: tall stands of evergreen beech, canelo and Guaitecas cypress.

### 16. Horseback riding and BBQ at Estancia Rancho Lourdes

**Full day / horseback riding / easy.**

Our "puesteros" friends (gauchos) await us at the Rancho Lourdes. There they will talk about life herding in the Patagonian pampa and give a demonstration of handling their sheep dogs. We then begin horseback riding, or we can ride horse traveling around the "campo," like a typical gaucho, part of the typical routine at an estancia. We can also participate in a round-up of animals and enjoy the sensation of the vastness of the pampa.

### 17. Climbing on Cerro Benítez

**Half-day / medium.**

The Patagonian peaks are a permanent challenge for climbers and mountaineers. This excursion allows guests to enjoy the euphoria of climbing, in a safe and recreational manner. We climb conglomerate rock walls using top ropes, whereby a climber uses a harness and hangs from a static rope, to remove the risk of falling. Our guides are all qualified and we provide all the necessary equipment. This excursion is ideal for kids and those who'd like to familiarize themselves with climbing.

## IV. TORRES DEL PAINE

### 18. Lakes, forests, and ice formations of Torres del Paine National Park

**Full day / walk / easy.**

We visit Torres del Paine from one extreme end to the other by van, passing by different lookout points: Laguna Amarga, Lake Nordenskiöld, and the Salto Grande cascade. This excursion, weather permitting, allows guests to see the principal peaks including the Towers, the Horns, Almirante Nieto peak, and the Paine Grande peak. After lunch, we walk to the beach at Lake Grey, where we can view huge icebergs along the shore. From a lookout point here we can also see the Glacier Grey in the distance.

This excursion offers a good introduction to Torres del Paine, and gives visitors an idea of the size and geographical diversity of Chilean Patagonia, and its flora and fauna that is present in all of Remota's excursions.

### 19. Mirador del Toro

**Full day / walk / medium.**

Along this route we will see excellent views of Lake Sarmiento and Torres del Paine. We begin walking to the traditional Estancia Lazo, on the shore of Lake Verde. The path crosses through forests of beech and, in spring, the area is replete with a variety of species of flowers. The trail ends at the Mirador del Toro, one of the best places to contemplate the rich geography of Torres del Paine: the enormous and cobalt-blue waters of Lake Toro, the Andean Mountain Range, the Almirante Nieto peak, the Horns, Paine Grande Mountain, and Glacier Grey.

### 20. Kayak between icebergs

(Available from May to September)

**Full day / kayak / easy.**

The drive to the shore of Lake Grey takes two hours. Along the way we are treated to the view of Lake Toro, the Horns, and Glacier Grey. Specialized guides give a talk about technique and security while kayaking. We then row between icebergs that rest near the shore, in awe of their shapes and intense blue color.

### 21. Base of the Towers

**Full day / walk / difficult / 800 meter climb.**

We begin this walk at the Estancia Cerro Paine, climbing to the Los Vientos pass, with a panoramic view of the pampa, lakes and the Río Ascencio valley.

After three hours we arrive at the foot of a glacier moraine, then climb from boulder to boulder until we arrive at the lake at the base of the Towers. This is an unforgettable experience that any hiker will keep close to his/her heart.

### 22. Valle Pingo

**Full day / walk / difficult.**

This walk takes us through old forests of Antarctic, evergreen, and deciduous beech, to the impressive waterfall of Río Pingo. This region is known for birdwatching, including diucons, long-tailed meadowlarks, and chimango caracaras. This is one of the few places still inhabited by the huemul, a native, endangered deer.

### 23. Observation of animal tracks (June to August)

**Full day / walk / medium difficulty.**

Winter is the best time to observe and photograph Patagonian fauna. The hills are covered in snow and so animals head to lower ground, where their tracks are easy to see. We hope to see the tracks of guanacos, armadillos, skunk, foxes, Geoffery's cat, lesser Rheas, and even a puma. This excursion leaves early, before dawn, and we bring along a high resolution telescope.

## V. SIERRA BAGUALES

### 24. The Peaks of Las Chinas

**Full day / walk / medium / not a marked trail.**

Sierra Baguales owes its name to the wild horses that still today flee from herders. The indigenous Aónikenk were fearful of these horses, and kept their distance. We walk a few kilometers along a basalt dike until we reach an extraordinary geological formation called the "The Peaks of las Chinas".

### 25. Mirador de Las Cumbres

**Full day / walk / difficult / 1,200 meters climb / not a marked trail.**

This trek begins at the Estancia Las Cumbres. We walk across the Baguales River with water up to our knees, then visit the Lake El Cráter, and walk up a steep hill until we reach the border with Argentina. Incredible panoramic view of the Baguales Mountain Range, Torres del Paine, and the Southern Ice Field.

## VI. MOUNT ROTUNDO

### 26. Bicycle Ride to Estancia Los Rebaños

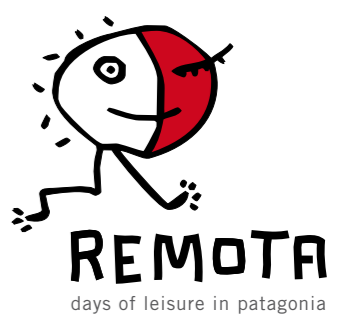
**Full day / medium.**

Bicycle ride to the Estancia los Rebaños that follows a road surrounded by forests of evergreen and deciduous beech, and canelo. In two hours we arrive at a lookout point that offers excellent views of the Almirante Montt gulf, Mount Rotundo, the Paine Massif, and the Mounumeto Moore peak.

### 27. Climb to Cerro Pelario

**Full day / walk / difficult / 1,000 meter climb / not a marked trail.**

Located south of Puerto Natales. At the top of this peak we are treated to views of the Almirante Montt gulf, Mount Rotundo, and the Pinto and Balmaceda Lakes.



RENOTA  
days of leisure in patagonia